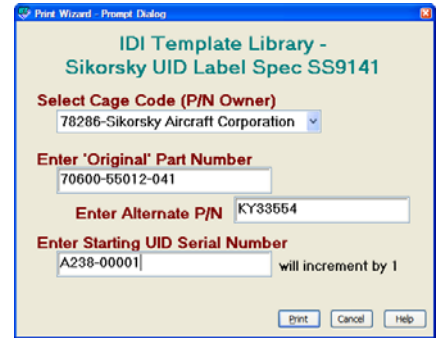




Product Profile: Sikorsky SS9141 Labels

ID Integration's UID Template Library now includes support for Sikorsky label specification SS9141. Utilizing the advanced scripting capability of Seagull Scientific's Bartender software, this single file supports the creation of UID labels for the 4 different physical layouts defined in SS9141. Numerous built-in quality control algorithms provide assurance of proper UID data syntax. Vendor & Sikorsky parts are supported via a common 'Prompt-At-Print-Time' user interface.



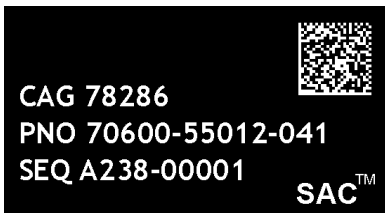
Benefits

Simplicity, Accuracy

Production workers can focus on their traditional job functions without need of knowledge or training in UID barcode data formatting. User data input is auto-formatted to prevent usage of illegal characters, excessive length or improper UID prefix style.

Sikorsky Part Support

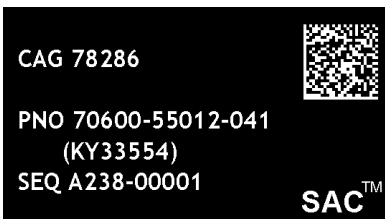
Select the Sikorsky Cage value from the print prompt pull-down menu and the "SAC" trademark will be auto inserted onto the label.



Continue with inputting Sikorsky P/N and UID Sequence values, and the layout will input these values into both the barcode and text lines simultaneously.

SIK Source Control Parts

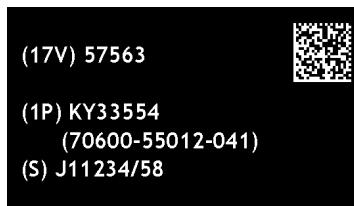
If the Vendor P/N is also to be included on the label, simply input a value for this 'alternate' P/N field in the prompt at print time form.



The barcode value remains unaltered. However, the text lines will auto-format to accommodate this extra information.

Vendor Spec Control Parts

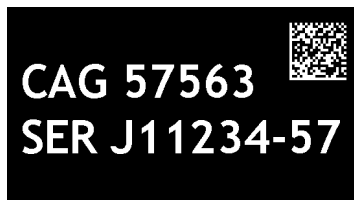
Vendors using this template for their own parts will simply begin by selecting their own Cage Code. The 'SAC' trademark is removed.



Vendors may include a Sikorsky P/N value as an 'alternate' P/N in the prompt at print time. As with Source Control labels, the layout is auto-formatted. This example also shows how the UID auto-changes to the use of DIs if the P/N or S/N either exceed 15 characters or include a "/" character (illegal for TEI usage).

Construct 1 Support

Although not allowed for Sikorsky Cage Code labels, Construct 1 vendor layouts are supported when the user does NOT input a value for P/N.



In this scenario, both the barcode value and text layout change to the appropriate data & prefix style.

Overview

Sikorsky SS9141 Support:

Single file supports UID layouts for...

- Sikorsky Manufactured Parts
- Sikorsky Source Control Parts, with optional Vendor P/N
- Vendor Specification Control Parts, with optional Sikorsky Design P/N
- UID Styles: Construct 1, 2 ; TEI, DI

Proper UID Syntax:

- User input auto-corrected for case, length and allowable characters.
- Auto-switch from TEI to DI prefixes when required by P/N & S/N values.
- Auto-switch to Construct 1 TEI layout when P/N isn't specified.

Use any Windows Printer:

- Bartender designs are printable on any marking devices having a true Windows Printer Driver.
- Although Black Anodize material is specified in SS9141, any material may be used with this template for other non-SS9141 purposes.

Single File Toolset:

- Minimize process confusion & support complexities with use of a single file to support numerous UID Marking layout style requirements.

Usage License:

- Template is available free to customers who purchase marking systems & installation services from ID Integration.
- Transfer, distribution, resale, or copying is prohibited.



Product Profile: Sikorsky SS9141 Labels

Ordering Information

IDI P/N Reference	SWBTSIK-01
Price	Free with IDI System Purchase & Install Services

Template Data Features – Barcode Syntax Controls

UID Prefix Selection	TEI-usage: CAG/PNO/SEQ & CAG/SER is preferred by SS9141. DI-usage: 17V/1P/S is allowed but used only when necessary to maintain legal UID data structure.
Allowable Characters	0-9A-Z/ for P/N & S/N (‘/’ not allowed for TEIs) ‘I’ and ‘O’ not allowed for CAGE values User data entry is auto corrected to upper case
Data Length – Cage	User is warned when CAGE value length is not 5
Data Length – P/N	32 max for DI usage; 15 max for TEI usage
Data Length – S/N	30 max for DI usage; 15 max for TEI usage
UID Format Code	Auto adjusts between 12(TEIs) and (06)DI
Construct 1 & 2	Auto adjusts if P/N Value is not provided CAG/PNO/SEQ & CAG/SER

Template Style Features – Text Layout

Font Size/Line Space	Text is auto-sized to length of user inputs
----------------------	---

Recommended System Hardware

CO2, Fiber, Lasers	Epilog FiberMark, Mini24, Helix Universal VersaLaser; Trotec
Thermal/RFID printer	Any 2”-6” label print system w/Windows driver
Chemical Etch	Any, when used w/ID Integration’s Stencil process
UID Verification -	Cognex DataMan Microscan Quadrus Verifier Siemens UIDChecker Webscan TruCheck USB
2-D Barcode Scanner	Siemens HE4xT; Microscan MSQ-Quadrus

Software Product Required

Label Design Software	Bartender, v8.x; From Seagull Scientific Inc. - Various product license levels available
-----------------------	---

Accessories

IDI Stock Library	Free IDI extension for Bartender. Extend usage of IDI Template files to 50+ layout sizes as easy as changing from letter to legal size in MS Word.
-------------------	--

ID Integration, Inc.
13024 Beverly Park Road; Suite 104
Mukilteo, WA 98275

Equipment & Service Sales:
Phone: (425) 438-2533
Fax: (425) 438-8764
<http://www.id-integration.com>

Standard & Custom Nameplates:
Available from our affiliated
Nameplate Service Bureau,
Jet City Laser, Inc.
Phone: (206) 623-4949
Fax: (206) 623-4951
<http://www.uid2go.com>

This Bartender Label format is the intellectual property of ID Integration, Inc. and is provided for use ONLY to those customers of ID Integration which have purchase industrial marking hardware systems and installation services from ID Integration Inc.

Distribution, copying, or transfer of this file and/or its internal design and/or script elements is hereby forbidden and punishable by monetary fine and/or legal action without the prior written consent and specification of terms from ID Integration, Inc.)

ID Integration, and the ID Integration logo are trademarks of ID Integration, Inc. Seagull Scientific, and Bartender are trademarks of Seagull Scientific, Inc.. Microsoft and Windows are either registered trademarks or trademarks of Microsoft Corporation in the United States and/or other countries. All other trademarks mentioned herein are the property of their respective owners.

Product description data represents ID Integration design objectives and is provided for comparative purposes; actual results may vary based on a variety of factors. Specifications, part numbers, and pricing are subject to change without notice. For updates & other related info, please check <http://www.id-integration.com/products>