

PARTIAL CLIENT LIST

US ARMY

BOEING

LOCKHEED MARTIN

RAYTHEON

ROCKWELL COLLINS

UNITED AIRLINES

SIKORSKY

HONEYWELL

ID INTEGRATION, INC.
13024 BEVERLY PARK ROAD • MUKILTEO, WA 98275
P (425) 438-2533 • F (425) 438-8764

INFO@ID-INTEGRATION.COM
WWW.ID-INTEGRATION.COM



GOING BEYOND THE MARK™

WE
PUT
THE
ID
IN
UID!

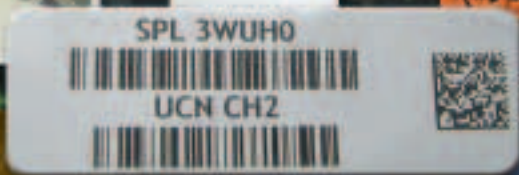
GOING BEYOND THE MARK™



ID INTEGRATION UID NEEDS ASSESSMENT™

ID Integration will support your company's implementation of the UID requirements to permanently and uniquely identify parts using labels and direct part marking by performing a needs assessment of your current marking and manufacturing processes.

The UID Needs Assessment is written in report form and is comprised of an engineering appraisal of the current plant operations, details of the hardware and software required to provide a solution, a cost review and a plan of action for implementation of the solution.



ID Integration Expertise includes:

Direct Part
Marking Systems

- Laser
- Dot Peen
- Chem Etch
- Inkjet

Label, Nameplate &
Stencil Systems

1, 2-D Barcode Reading
& Verification Systems

Custom & Commercial
Software Systems

Contract Part
Marking Services

Whether your company is new to UID requirements or not, ID Integration's years of industry experience can quickly help you create an integrated system of marking, verification, scanning and database interface tools.

Our specialty is matching your unique application to the proper marking technology and UID data construction.

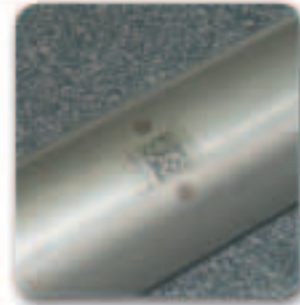


ID INTEGRATION'S 5 STEP PROCESS TO MAKE A PART A USABLE UID PART

MARK THE PART - UID part marking is applying a Data Matrix Code to a part with a set of data that is globally unique as defined in the UID policy. The symbology used to mark a part is a 2D Data Matrix Code. The Data Matrix Code can be applied in three ways as long as it remains permanent through the part's life and not damaged or destroyed in use:

1. Marked directly to the part surface
2. Through a nameplate affixed to the part surface
3. Attaching a label to the part surface.

■ ID Integration offers solutions for all three methods.



VERIFY THE MARK — The UID policy requires that the Data Matrix Code is created to a certain quality standard depending on the marking technique used. The unique set of data in the Data Matrix Code is also verified that it is correct and meets the data format of the UID policy.

■ ID Integration offers verification hardware and software solutions to meet these requirements.

READ THE MARK — Reading the Data Matrix Code requires a 2D imager; they cannot be read using an ordinary linear barcode laser scanner. The Data Matrix Code reader will accurately and reliably read the data elements and output the data to computers and software systems.

■ ID Integration offers many different reader solutions depending on the type of part mark and the application the data needs to be read into.



TRANSMIT THE DATA IN THE MARK — The UID data needs to be transmitted to automated information systems that give the DoD and Contractors the ability to distinguish one item from another. The UID ensures data integrity and data quality throughout the parts life and supports multi-faceted business applications and users.

■ ID Integration and its strategic partners offer total solutions for integrating the UID to Enterprise and Manufacturing Resource Planning, Manufacturing Execution and Asset Management Systems through a local area network or through web based applications.



REGISTER THE DATA IN THE MARK — The UID data needs to be registered in the DoD UID registry before payment will be processed.

■ ID Integration and its strategic partners offer solutions for integrating the UID data to the DoD DD250 Form and UID Registry via the DoD Wide Area Work Flow.